

SETUP SHEET



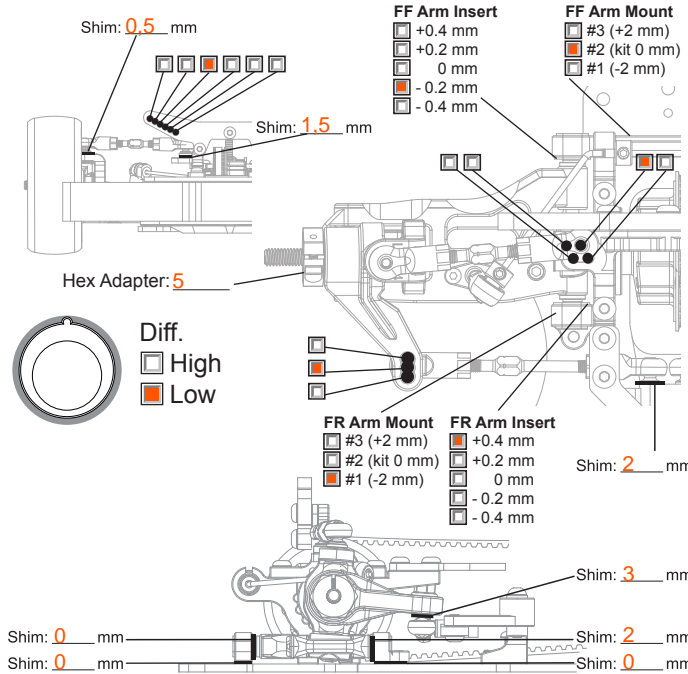
TRACK CONDITIONS

Type: Carpet Asphalt Size: Open Med. Tight
 Place: Indoor Outdoor Traction: High Med. Low
 Surface: Smooth Med. Bumpy Track Temp/Air Temp: _____ / _____

Note: 2 2,3mm topdecks cutout steeringblock for more angle(29°) fastest overall laptme 12,28s (ifmar WC 12,17s)

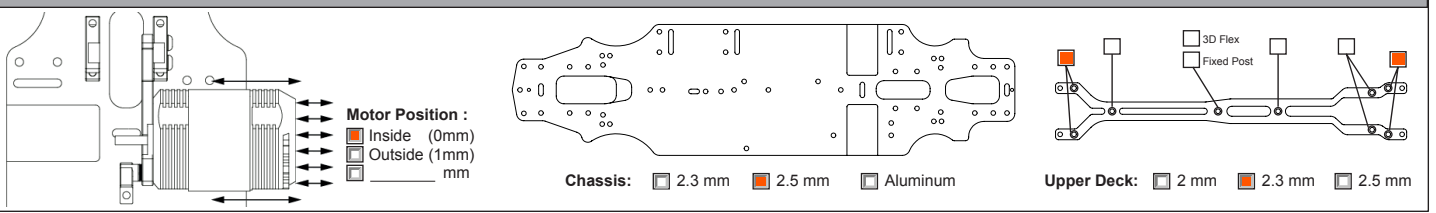
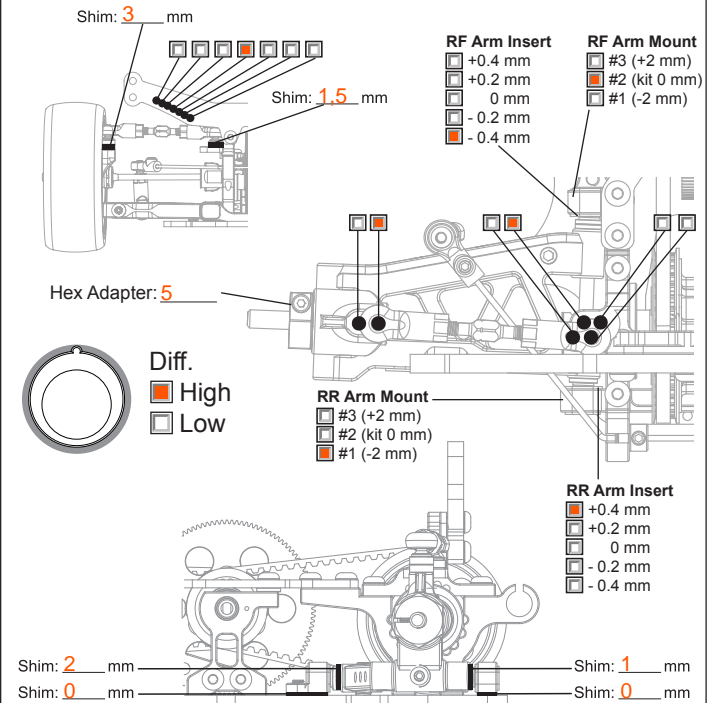
FRONT SUSPENSION

Track Width: _____ mm Gear Diff _____ wt
 Toe Angle: 1 ° One Way
 Caster: 4 ° Spool
 Camber: 2 °
 Ride Height: 5,2 mm Anti-Roll Bar: \varnothing 1,3 mm
 Down Stop: 4,6 mm



REAR SUSPENSION

Track Width: _____ mm Gear Diff 7000 wt
 Toe Angle: 1,9 °
 Camber: 2,5 °
 Ride Height: 5,4 mm
 Down Stop: 4,6 mm Anti-Roll Bar: \varnothing 1,2 mm



ELECTRONICS

Servo: Futaba
 ESC: LRP SXX V2
 Battery: LRP 5800

MOTOR

Brand: LRP X20
 Turns: 10,5
 Timing: Timing Set

ESC

Punch: 10
 Initial Brake: 0
 Drag Brake: 0
 ESC Timing Turbo Timing

DRIVE RATIO

Spur 102_T
 Pinion 45_T X1.9 = 4.31

TIRES

Insert: LRP G32
 Wheel: _____
 Shore/deg: _____
 Compound: _____
 Tire Temp: _____
 Tire additive: _____
 Treated Area

FL FR RL RR

SHOCKS

Hole Size: F 1,1 R 1,1
 Holes In Piston: F 3 R 3
 Shock Oil WT: F 450 R 450
 Shock Springs: F HPI silver R HPI silver
 Shock Rebound: F 50 R 50
 Bladder Note: _____
 Thread Length: F _____ R _____
 Shock Length: F _____ R _____

BODY

Body Position: 4mm Body: HB Mazda MPS LW
 Wing Height: _____
 Wing Position: _____