



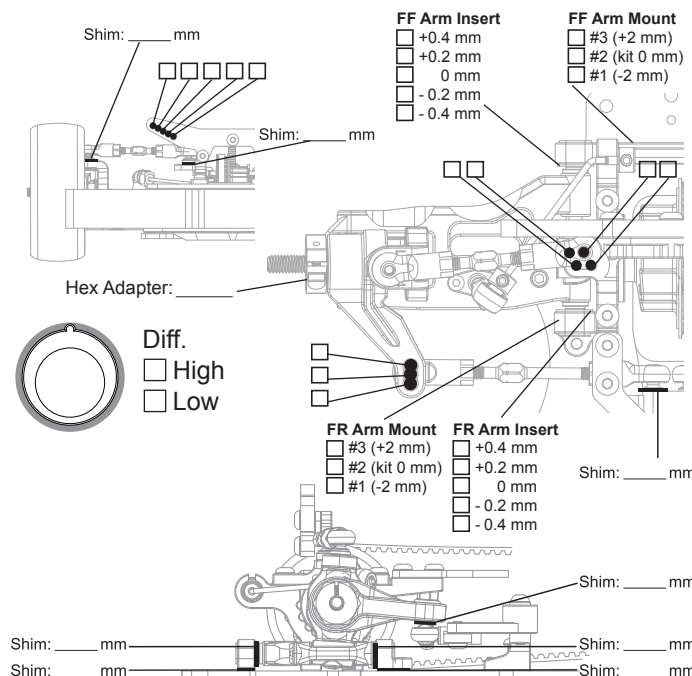
TRACK CONDITIONS

Type : ☐ Carpet ☐ Asphalt
 Place : ☐ Indoor ☐ Outdoor
 Surface: ☐ Smooth ☐ Med. ☐ Bumpy
 Note: _____

Size: ☐ Open ☐ Med. ☐ Tight
 Traction: ☐ High ☐ Med. ☐ Low
 Track Temp/Air Temp: _____ / _____

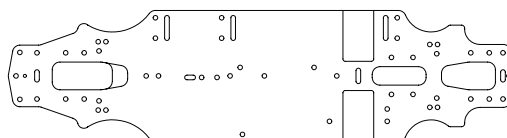
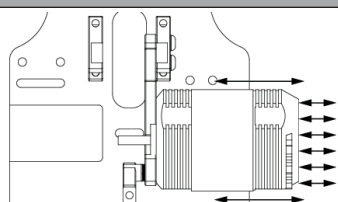
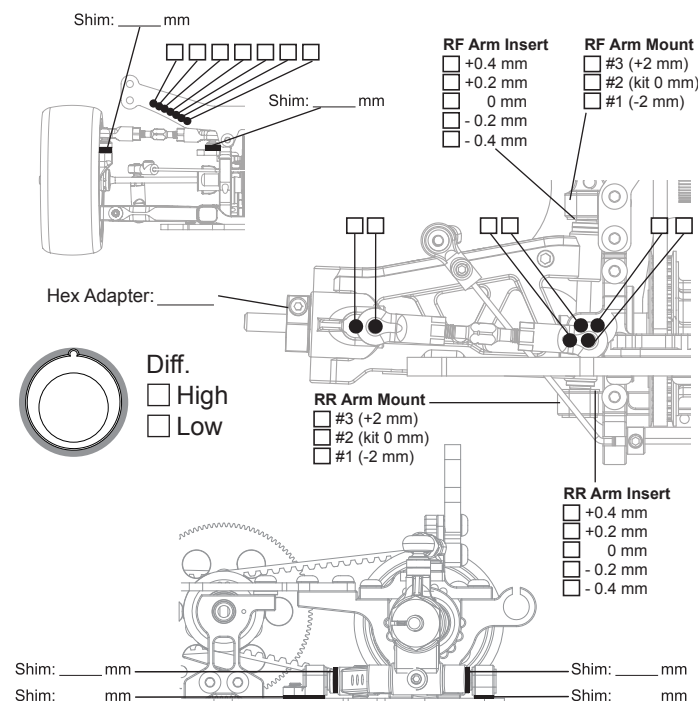
FRONT SUSPENSION

Track Width: _____ mm ☐ Gear Diff _____ wt
 Toe Angle: _____ ° ☐ One Way
 Caster: _____ ° ☐ Spool
 Camber: _____ °
 Ride Height: _____ mm Anti-Roll Bar: Ø _____ mm
 Down Stop: _____ mm

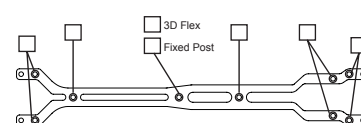


REAR SUSPENSION

Track Width: _____ mm ☐ Gear Diff _____ wt
 Toe Angle: _____ °
 Camber: _____ °
 Ride Height: _____ mm
 Down Stop: _____ mm Anti-Roll Bar: Ø _____ mm



Chassis: ☐ 2.3 mm ☐ 2.5 mm ☐ Aluminum



Upper Deck: ☐ 2 mm ☐ 2.3 mm ☐ 2.5 mm

ELECTRONICS

Servo: _____
 ESC: _____
 Battery: _____

MOTOR

Brand: _____
 Turns: _____
 Timing: _____

ESC

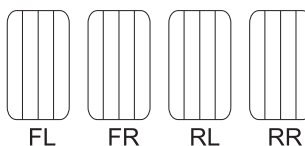
Punch: _____
 Initial Brake: _____
 Drag Brake: _____
☐ ESC Timing ☐ Turbo Timing

DRIVE RATIO

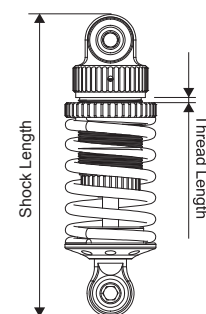
Spur $\frac{T}{T} \times 1.9 =$
 Pinion _____

TIRES

Insert: _____
 Wheel: _____
 Shore/deg: _____
 Compound: _____
 Tire Temp: _____
 Tire additive: _____
 Treated Area



SHOCKS



Hole Size: F _____ R _____
 Holes In Piston: F _____ R _____
 Shock Oil WT: F _____ R _____
 Shock Springs: F _____ R _____
 Shock Rebound: F _____ R _____
 Bladder Note: _____
 Thread Length: F _____ R _____
 Shock Length: F _____ R _____

BODY

