

E4RS III / III PLUS - Tip 3: Driveshafts dismantling

This operation is considered by many users of many RC cars brands as one of the most difficult.

For sure, the driveshafts are more free with a G-clip, and we never lost a pin during a run since we switched from grub screw to G-clip... but it's less easy to assemble, we can't have all the advantages !

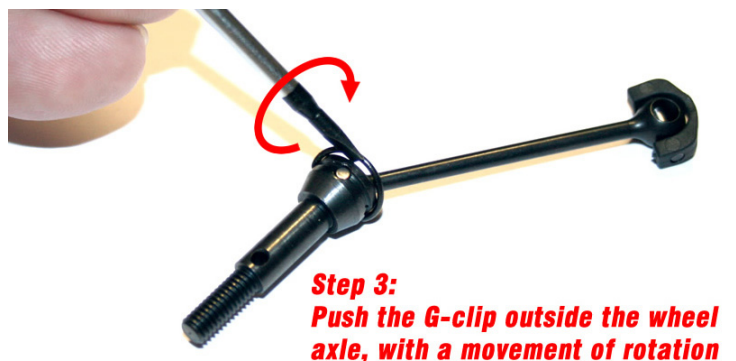
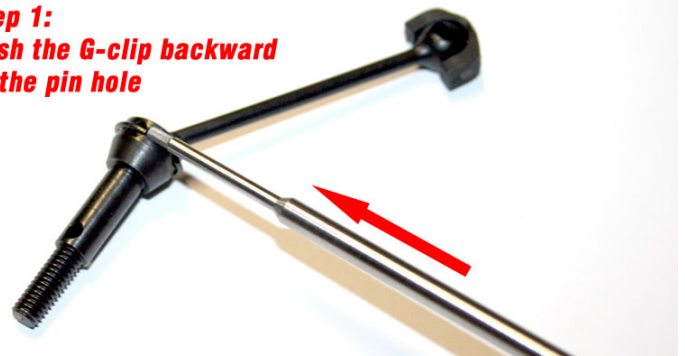
First step is to push the G-clip's end side backward to the next pin hole. The clip will stay on that hole and create space on the opposite side.

Second step is to insert a small flat screwdriver on the space on the opposite side, between the G-clip and the wheel axle.

Third step is to push the G-clip outside the wheel axle, by a simple and easy movement of rotation.

On the fourth step, job is done, the G-clip is removed from the wheel axle.

Step 1:
Push the G-clip backward to the pin hole



Step 4:
Job is done !
G-clip is now removed